



HR 1100 LOADER

OPERATOR'S & PARTS MANUAL

TUBELINE MANUFACTURING / FREY INDUSTRIES

3928 Steffler Rd. Elmira, Ontario N3B 2Z3

Telephone: (519) 664-0488 Fax: (519) 664-0492

Toll Free (888) 856-6613

Email: sales@freyindustries.com

TABLE OF CONTENTS

- SECTION 1: SAFETY & WARNINGS**
- SECTION 2: OPERATION & SERVICE**
- SECTION 3: WARRANTY**
- SECTION 4: ILLUSTRATIONS & PARTS GUIDE**
- SECTION 5: OPTIONAL FEATURES**


CAUTION

ALWAYS make sure the implement is LOCKED on the Tool Carrier before beginning loader operation.

This can be checked by observing the locking lever position and forcing the implement against the ground using the loader hydraulic cylinders.

Failure to properly install implement can cause the implement to come off the Tool Carrier resulting in serious injury to the operator or bystanders.

DANGER



Serious injury or death can result from contact with electric lines.

DE23584
Caution Decal
 (make sure attachment are secure)

DE23581
Danger Decal
 (high voltage lines)

WARNING



To avoid injury or death caused by falling loads:

- Do not handle round bales unless loader is equipped with approved bale handling attachments.
- Lockout optional valve detents.
- Handle raised loads with caution.
- Carry loads low.

WARNING



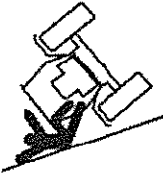
To avoid injury from falls:

- Do not work from or allow riders on loader or its attachments

DE23579
Warning Decal
 (bale roll down arms)

DE23583
Warning Decal
 (do not ride in bucket)

DANGER



Serious injury or death can result from rollovers.

- Use ropes and seatbelt at all times.
- Add required rear ballast.
- Move wheels to widest recommended setting.
- Operate tractor at low speeds.

WARNING



To avoid injury from falling loader:

- Do not walk or perform service under a raised loader
- Lower loader to ground when parked

DE23580
Danger Decal
 (tractor rollover)

DE23582
Warning Decal
 (under loader danger)



I

DECANADA
(made in Canada)

! CAUTION

Be sure to purge all the air from the hydraulic system before attempting to raise or lower this machine. Refer to owner's manual for further details.

DE22581
Caution Decal
(purge lines)

! CAUTION

1. Read operator's manual (especially safety precautions) before operating this machine.
2. Move and turn tractor at low speeds.
3. Carry loader arms at a low position during transport.
4. Lower arms, stop engine, relieve all hydraulic pressure, and lock brakes before leaving operator's seat.
5. Add recommended wheel ballast or rear weight for stability.
6. Move wheels to widest recommended settings to increase stability.
7. A roll-over protective structure is recommended for a tractor equipped with a loader.
8. Before disconnecting hydraulic lines, relieve hydraulic pressure.
9. Escaping hydraulic oil under pressure can have sufficient force to penetrate the skin, causing serious personal injury. If injured by escaping fluid, obtain medical treatment immediately.
10. Do not use loader for handling large, loose or shiftable loads which might fall out of the bucket or roll down the loader arms onto the operator.
11. Make sure loader and attachments are properly secured before operating.

DE21703
Caution
(read manual)

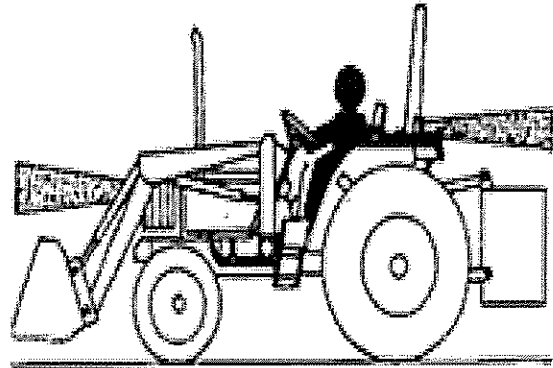
Driving on Public Roads

While driving tractor and loader, follow these precautions:

- Carry loads close to the ground to aid visibility and to lower center of gravity.
- Allow for additional length of loader on tractor while turning.
- Balance loads so weight is evenly distributed and load is stable.
- Drive slowly if carrying materials.

Rough conditions may cause material to spill.

- Avoid carrying materials wider than the bucket/attachment or tractor.



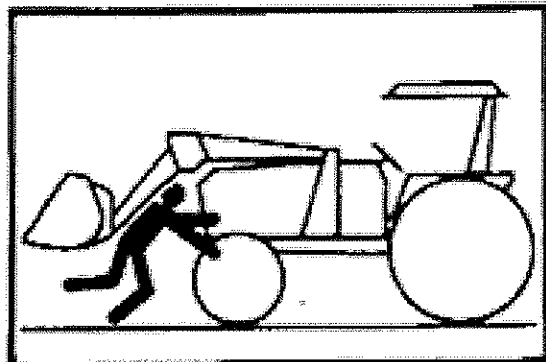
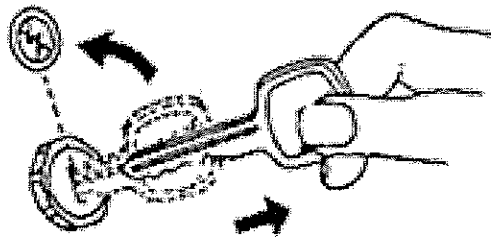
Service Loader Safely

Always engage parking brake or place transmission in Park, lower loader to the ground, shut off engine and remove key before servicing the loader.

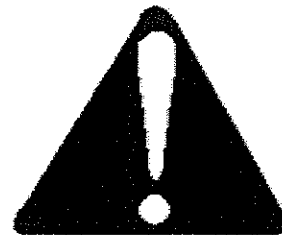
Do not walk or perform service under a raised loader, bucket or attachment unless it is securely blocked or held in position.

Keep all parts in good condition and properly installed. Repair any damage immediately and repair or replace any worn or broken parts.

Before disconnecting hydraulic hoses, relieve all hydraulic pressure.



This is a safety-alert symbol. When you see this symbol on your machine or in this manual, be alert to the potential for personal injury. Follow recommended precautions and safe operating practices.



Understand Signal Words

A signal word – DANGER, WARNING, or CAUTION- is used with the safety-alert symbol. DANGER identifies the most serious hazards.

▲ DANGER

▲ WARNING

▲ CAUTION

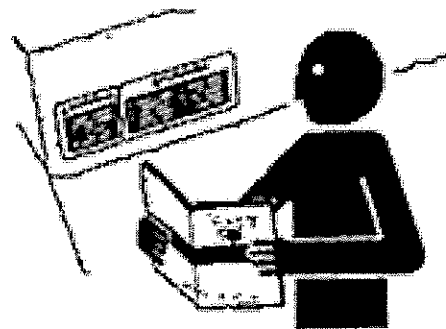
Follow Safety Instructions

Carefully read all safety messages in the manual and on your loader safety signs. Keep safety signs in good condition. Replace missing or damaged safety signs. Be sure new equipment components and repair parts include the current safety signs. Replacement safety signs are available.

Learn how to operate the loader and how to use the controls properly. Do not let anyone operate without instruction.

Keep your loader in proper working condition. Unauthorized modifications to the loader may impair the function and/or safety and affect loader life.

If you do not understand any part of this manual and need assistance, contact Frey Industries.



OWNER RECORDS

Model: _____

Serial No: _____

Date Purchased: _____

Dealer: _____



Dear Customer:

Congratulations in purchasing the finest loader manufactured. Our loader will provide you with many years of service, but as with any product, proper operation and service must be maintained to insure its longevity. This manual contains all the pertinent information needed to operate and maintain your loader.

The FREY Vertex Loader is designed to fit agricultural tractors in the 80 to 140 HP range and are specifically designed to be used in agricultural and livestock businesses. The Loader has been manufactured to be user friendly as far as operating, mounting and dismounting.

It is very important that you take the time to read and familiarize yourself with this manual. Be sure that you have signed the loader WARRANTY REGISTRATION card and your dealer has sent it to our office for registration.

We at FREY Sincerely appreciate your business and our commitment is to customer satisfaction. Please contact your dealer or our customer service unit with any question about our loaders or any of our other products.

Thank You

Frey Industries Ltd.

DO'S

1. Read this manual before operating the loader. It is important to become familiar with and follow all recommended safety precautions.
2. Rollover protection is recommended for your tractor while operating the loader.
3. Follow all mounting and operating instructions carefully.
4. Move the wheels to the widest adjustment and add rear weight to insure maximum stability.
5. Lower the loader to the lowest position, stop the engine, relieve the hydraulic system pressure and set the tractor brakes before leaving the operator's seat.
6. When the tractor is in motion, keep the loader in a lower position. This will insure that your vision will not be hampered.
7. Be sure to slow down when making turns with your tractor to prevent accidentally hitting objects with your loader arms.
8. Before disconnecting the hydraulic hoses, release any hydraulic pressure from the system to prevent serious injury from rapidly escaping pressurized oil.
9. Adjust your tractor speed when the loader is carrying a load according to the conditions and terrain.
10. If you are operating the loader with a hydraulic valve, always be sure to use smooth motions when operating the lever (s) to prevent jerking of the loader and always be sure the lever (s) return to their neutral position. **Never Assume Anything!!!**

DO NOT'S

1. Do not hesitate to contact your dealer for assistance in mounting and operation of your loader.
2. Do not make drastic movements with the tractor or loader.
3. Do not continue operation if tractor balance is affected.
4. Do not exceed loader specifications.
5. Do not use loader for moving large, shiftable or loose loads that are not properly secured to the attachment. This will prevent the load from falling off or rolling down the loader boom arms.
6. Do not use the loader for lifting or carrying people for any reason.
7. Do not stand, walk or work under a raised loader under any condition.
8. Do not use the loader for backgrading. This improper use of the loader puts extreme stress on the latching device, which could cause it to fail.
9. Do not run the loader into a mound of material at a rapid speed. This kind of action could cause serious damage to your loader or tractor or it could result in a serious injury.
10. Do not strictly use the lift arms for lifting the load. The tilt cylinders should be used to assist you in lifting your load.
11. **Very Important!!!** Never operate the loader without the safety pins installed on the main loader frame and attachments. Failure to do so could cause the loader or attachments to come unattached from the mounting frame.

Failure to comply with the above DO'S and DO NOT'S may result in equipment failure and / or personally injury!

Loader Operation/Maintenance

1. Once the hydraulics have been hooked up, you must bleed the air from the hydraulic system before operation. Leaving air in the system could be very dangerous because it greatly affects the performance of the loader. Loosen the hyd. fittings on the lower cylinders and activate the tractor remote or auxiliary valve until clean, uncontaminated oil flows out. The loader will go up and down smoothly without jerking and there should be no unusual noises coming from the hydraulic system. Always be sure that all connections have been properly tightened.
2. After completion of Item 1 above, recheck all mounting frame bolts for proper torque. Initial operation can cause loosening of the fasteners. Please double check again after the first hour of operation and again after 10 hours of operation.
3. Our loader can be used in many different functions and will perform up to expectations, however, the loader **has not** been designed to be used in any type of digging and we highly recommend you refrain from this activity. **The loader warranty does not cover damage that occurs as a result of misuse.**
4. There are two primary positions for the loader; the neutral position and the working position. When the loader is in the neutral position, there is no hydraulic oil movement in any of the loader's cylinders. If you are using the tractor remotes, the loader will remain in neutral until you open the remote by moving the remote lever on the tractor. If you are using an additional hydraulic valve the oil will pass through the valve and back to the tank until the lever on the valve is actuated and then the oil will travel to the lift or bucket cylinders. The loader is in the working position when you open the tractor remote or auxiliary valve by pushing or pulling the lever. This allows the oil to travel to the cylinders that activates their movement in either lifting or tilting function.
5. The hydraulics can be hooked up to your tractor in many different ways. This is usually decided at the dealership where you purchased the loader. We recommend that you familiarize yourself on how your dealer hooked up your hydraulics. This can help us in the future if you are needing to check your system for hydraulic leaks or any other unseen problem. If you have purchased an auxiliary valve to operate your loader, be sure that you allow the hydraulic oil to warm up before operating the loader. If the hydraulic fluid has not warmed up, its viscosity will be too low; it will not move properly and could damage the hydraulic lines. After the hydraulic oil has reached its operating temperature, always limit the number of times you open and close your valve. By repeatedly opening and closing the valve you could experience overheating of your tractor hydraulic system.

SERVICE

1. Check your tractor's hydraulic oil often and check the hydraulic fittings for any looseness that may occur after prolonged use.
2. If the control valve is making noise, it will need to be adjusted.
3. All grease points should be greased regularly especially if you use the loader often.
4. Please change the oil in the loader every 500 hours if it's being used in heavy work conditions, 800 hours if in normal working conditions and 1100 hours if being used in light applications.
5. If your loader is needing major service we highly recommend that you take it to your closest Frey dealer for repairs.
6. Frey will only honor warranties performed by qualified technicians approved by our company.
7. Replacement parts can be obtained at your nearest authorized Frey dealer.
8. **(VERY IMPORTANT)** When ordering parts it is essential that you give the model of your loader, serial number, date of purchase, what kind of tractor it is mounted on and the part number required. (Refer to the parts catalog at the back of the manual to find the part number you need.)
9. **NEVER** use any attachments that are not specifically designed for our loader. Doing so will void your warranty.

| PROBLEM | REASON | SOLUTION |
|--------------------------------------------------|---------------------------------|----------------------------|
| Oil Leaking | Loose hydraulic fittings | Tighten leaking fitting |
| | Damaged gaskets | Replace leaking gaskets |
| | Damaged hydraulic lines | Replace leaking line |
| | Damaged couplers | Replace leaking coupler |
| | | |
| Loader jerks or makes excessive noise | Low oil level | Add oil to tractor |
| | Vibration in the pressure lines | Secure the lines |
| | Air in loader system | Bleed the air out |
| | Dirty Oil | Change oil |
| | Water in oil | Change oil |
| | | |
| Movement of loader lift cylinder is uncontrolled | Air in cylinder | Bleed the hydraulic system |
| | Damaged seals | Change seals |
| | Deformed seals | Change cylinder |
| | Pressure isolation | Control & change isolation |



WARRANTY

Frey Industries Ltd. warrants each item of farm equipment distributed by FREY, to be free from defects from material and workmanship under reasonable use and service.

The obligation of the Company under this warranty is limited to the repairing, the replacing or the refunding of the purchase price, less reasonable depreciation, as the Company may elect, for part or parts which shall be returned to a Distributor or Dealer of the Company with transportation charges prepaid by the purchases, and as to which examination shall disclose to the Company's satisfaction to have been defective in material or workmanship, provided that such part or parts shall be reported to the Dealer or Distributor as being defective not later than twelve months from the date of the first use by the original purchaser. This warranty does not obligate FREY to bear the cost of labour in replacement of such defective parts.

This warranty shall not apply to equipment which has been altered, improperly maintained, or repaired so as in the Company's judgment, to have adversely affected its performance. The Company makes no warranty of any character with respect to electric motors, belts, hydraulic hoses, valves, cylinders, or other items not manufactured by the Company.

The Company's warranty and its obligation hereunder is in lieu of all other warranties, including without limitation, IMPLIED WARRANTIES OF MERCHANTABILITY AND FITNESS FOR A PARTICULAR PURPOSE and all other representations to the Distributor, Dealer and original purchaser, that extend beyond the description of the equipment. The Company shall not be liable for incidental and consequential damages or either of them of any nature whether based on tort or contract. No person is authorized to give warranties or to assume any liabilities unless made in writing by an authorized representative of FREY.

Caution!!

This Vertex Loader must be installed on a tractor using a factory installed control valve or relief block. If neither is on the loader when installed, damage to loader can result and warranty will be void.

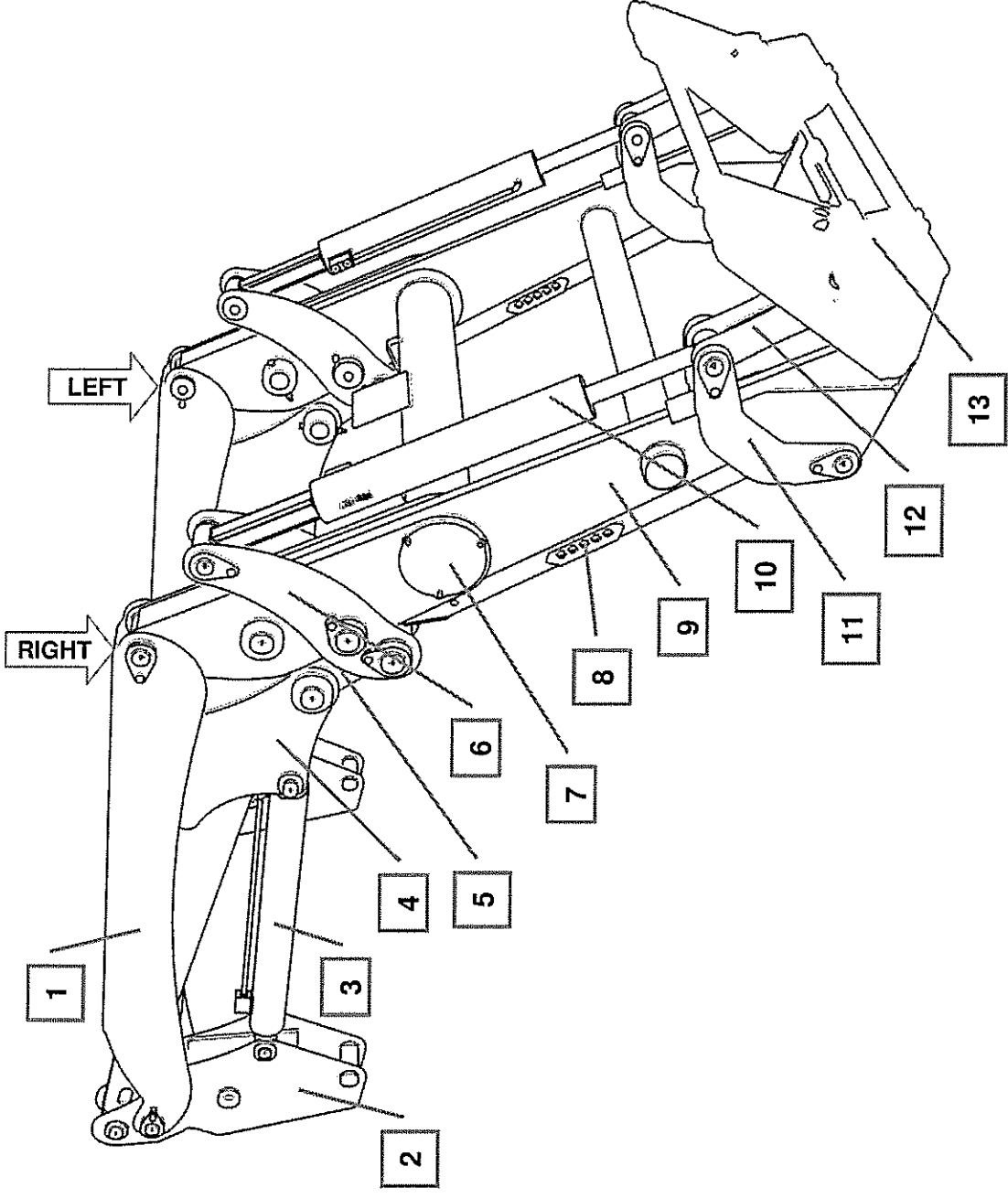
COMPLETE AND RETURN WARRANTY CARDS



HR 1100

**ILLUSTRATIONS
&
PARTS GUIDE**

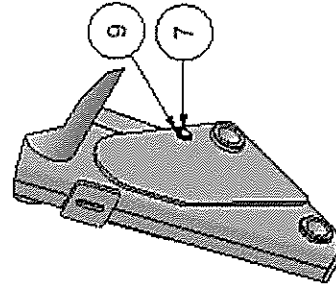
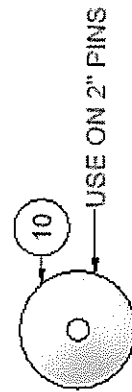
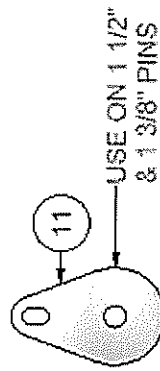
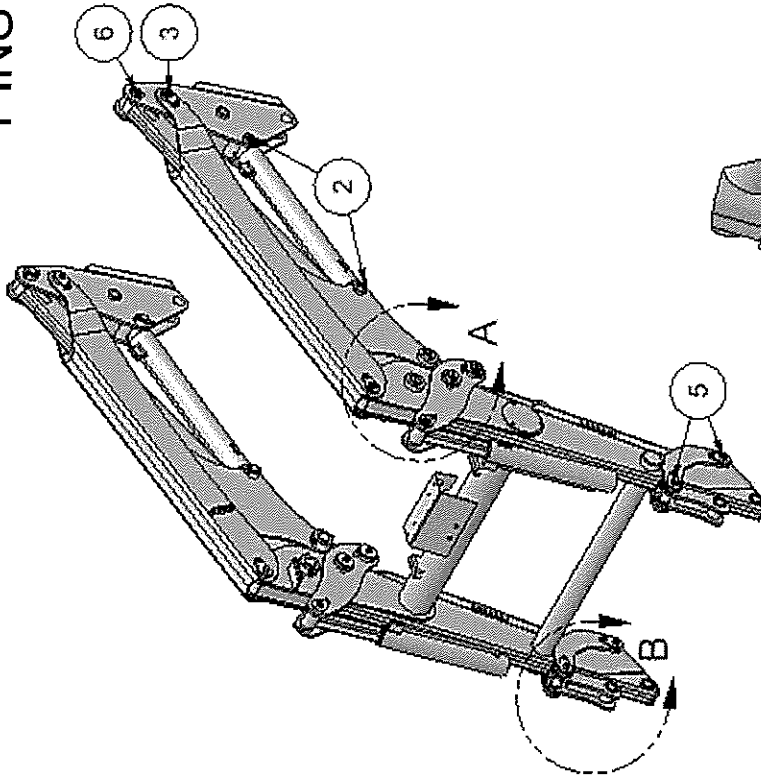
LOADER PARTS BREAKDOWN



| LOADER PARTS BREAKDOWN | | |
|-------------------------------|----------------------|-----------------------------------------|
| <u>ITEM</u> | <u>PART #</u> | <u>DESCRIPTION</u> |
| 1 | 23458 | LEFT & RIGHT HR ARM CHANNEL |
| 2 | 23403 | LEFT & RIGHT LOADER POST |
| 3 | P06-016 | 3" BORE STANDARD LIFT CYLINDER |
| | P06-125 | 2 1/2" BORE OPTIONAL LIFT CYLINDER |
| 4 | 23408 | LEFT & RIGHT TOP BOOM ARM |
| 5 | 23744 | SELF-LEVELING LINK |
| 6 | 23447 | LEFT & RIGHT ROCKER ARM |
| 7 | 23597 | CROSS TUBE COVER |
| 8 | 23471 | STAND LEG |
| 9 | 23432 | BOTTOM BOOM |
| 10 | P07-094 | 3" BORE STANDARD BUCKET CYLINDER |
| | P07-095 | 2 1/2" BORE OPTIONAL BUCKET CYLINDER |
| 11 | 23443 | INDUSTRIAL LINK PLATE |
| 12 | 23757 | BUCKET LINK |
| 13 | BUCKET ADAPTOR PLATE | |

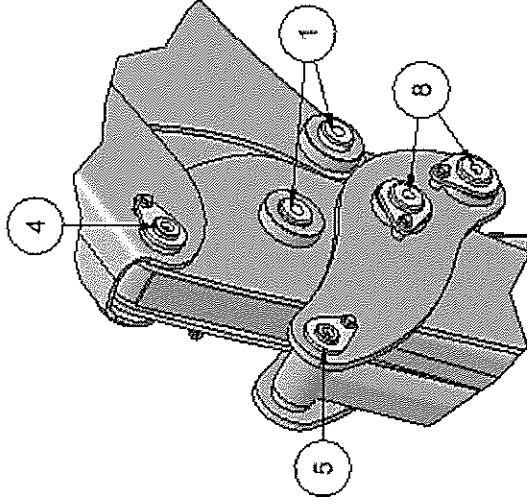
CYLINDER PART NUMBERS ARE STAMPED ON CYLINDER BARREL
 SUPPLY CYLINDER PART NUMBERS WHEN ORDERING REPLACEMENT CYLINDERS OR SEAL KITS

PINS



DETAIL B

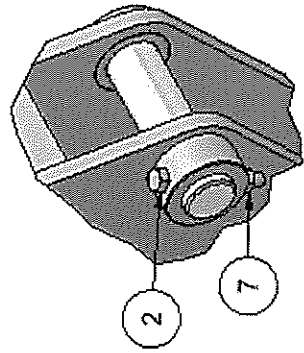
STAND PIN & RETAINING RING



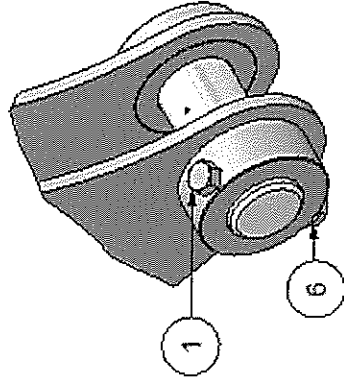
DETAIL A

| ITEM | QTY | PART NUMBER | DESCRIPTION |
|------|-----|-------------|-----------------------------|
| 1 | 4 | 23097 | 2" X 6 1/4" PIN |
| 2 | 4 | 23104 | 1 3/8" X 5 7/8" PIN |
| 3 | 2 | 23478 | 1 1/2" X 5 5/16" PIN W TAB |
| 4 | 2 | 23480 | 1 1/2" X 5 1/2" PIN W TAB |
| 5 | 6 | 23482 | 1 3/8" X 5 1/16" PIN W TAB |
| 6 | 2 | 23540 | 1 1/2" X 5 7/8" PIN |
| 7 | 2 | 23650 | 3/4" X 3 11/16" PIN |
| 8 | 4 | 23815 | 2" X 6 5/16" PIN W TAB |
| 9 | 4 | RR 0.75 | RETAINING RING |
| 10 | 4 | 23677 | PIN TAB FOR 2" PINS |
| 11 | 10 | 23479 | PIN TAB FOR 1 3/8" & 1 1/2" |

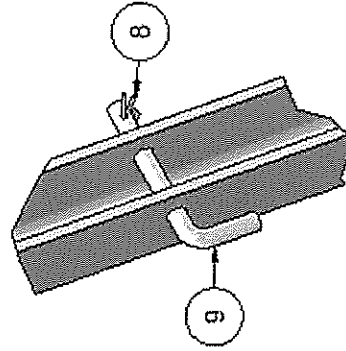
PIN HARDWARE



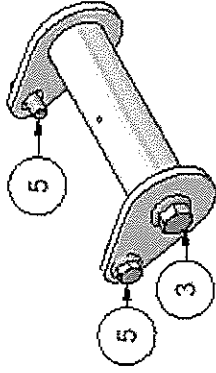
1 3/8" & 1 1/2"
PINS WITH FURRELS



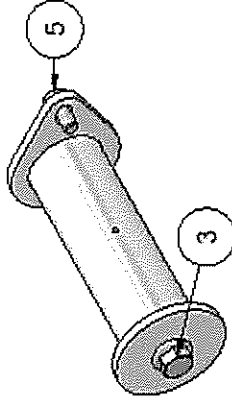
2" PINS
WITH FURREL



STAND PINS



1 3/8" & 1 1/2" PINS

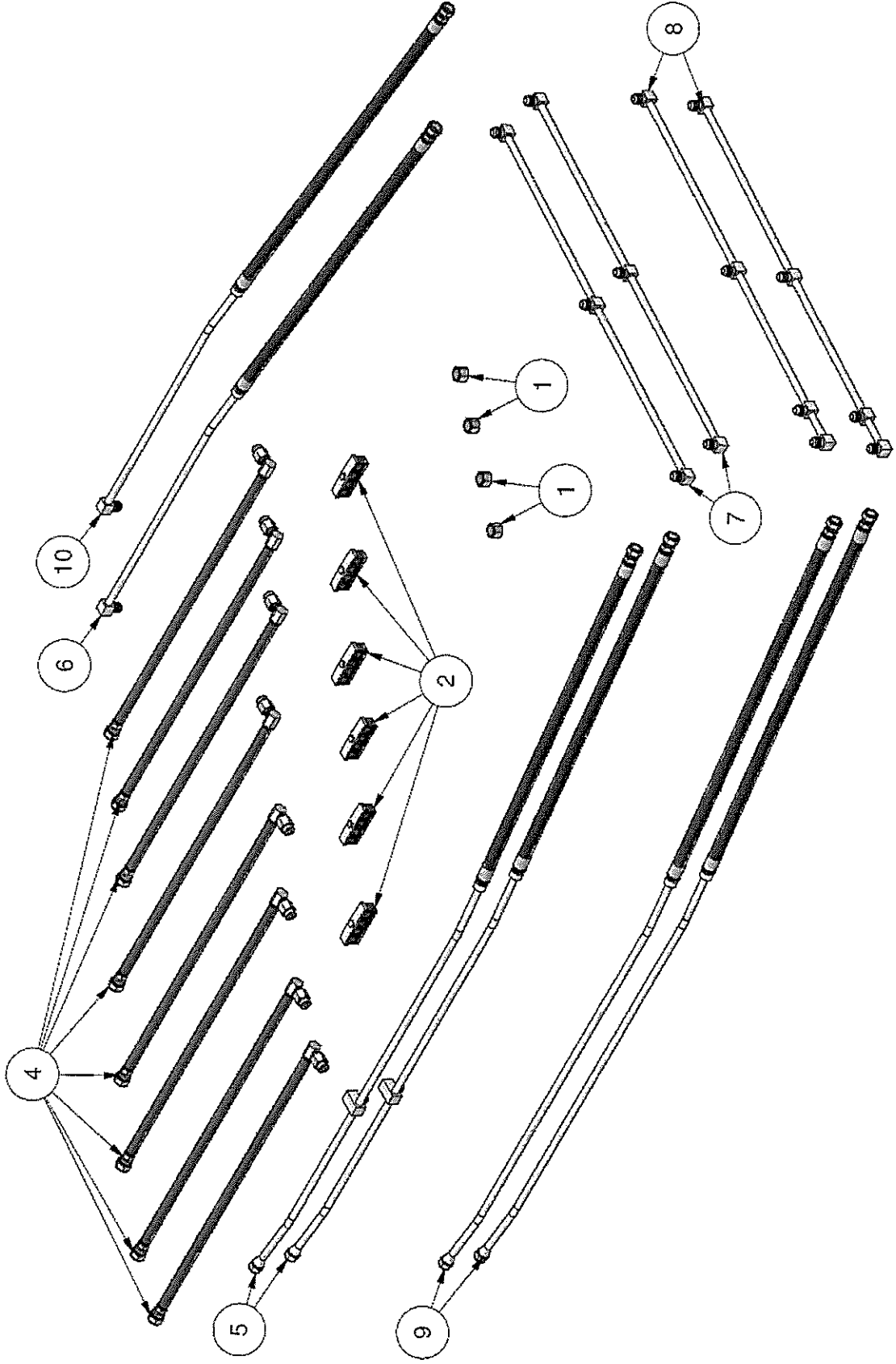


2" PINS
WITH TABS

| ITEM | QTY | PART NUMBER | DESCRIPTION |
|------|-----|-----------------|-----------------|
| 1 | 4 | HB 1/2" X 4" | HEX BOLT |
| 2 | 6 | HB 3/8" X 3" | HEX BOLT |
| 3 | 14 | HBC 1/2" X 3/4" | FLANGE HEX BOLT |
| 4 | 8 | HBC 1/4" X 1/2" | FLANGE HEX BOLT |
| 5 | 24 | HBC 3/8" X 3/4" | FLANGE HEX BOLT |
| 6 | 4 | HNC 1/2" | FLANGE HEX NUT |
| 7 | 6 | HNC 3/8" | FLANGE HEX NUT |
| 8 | 2 | HP .125X1.5 | HAIR PIN |
| 9 | 2 | 21021 | 560 STAND PIN |

STANDARD HYDRAULIC LINES BREAKDOWN

HYDRAULIC KIT # 23510

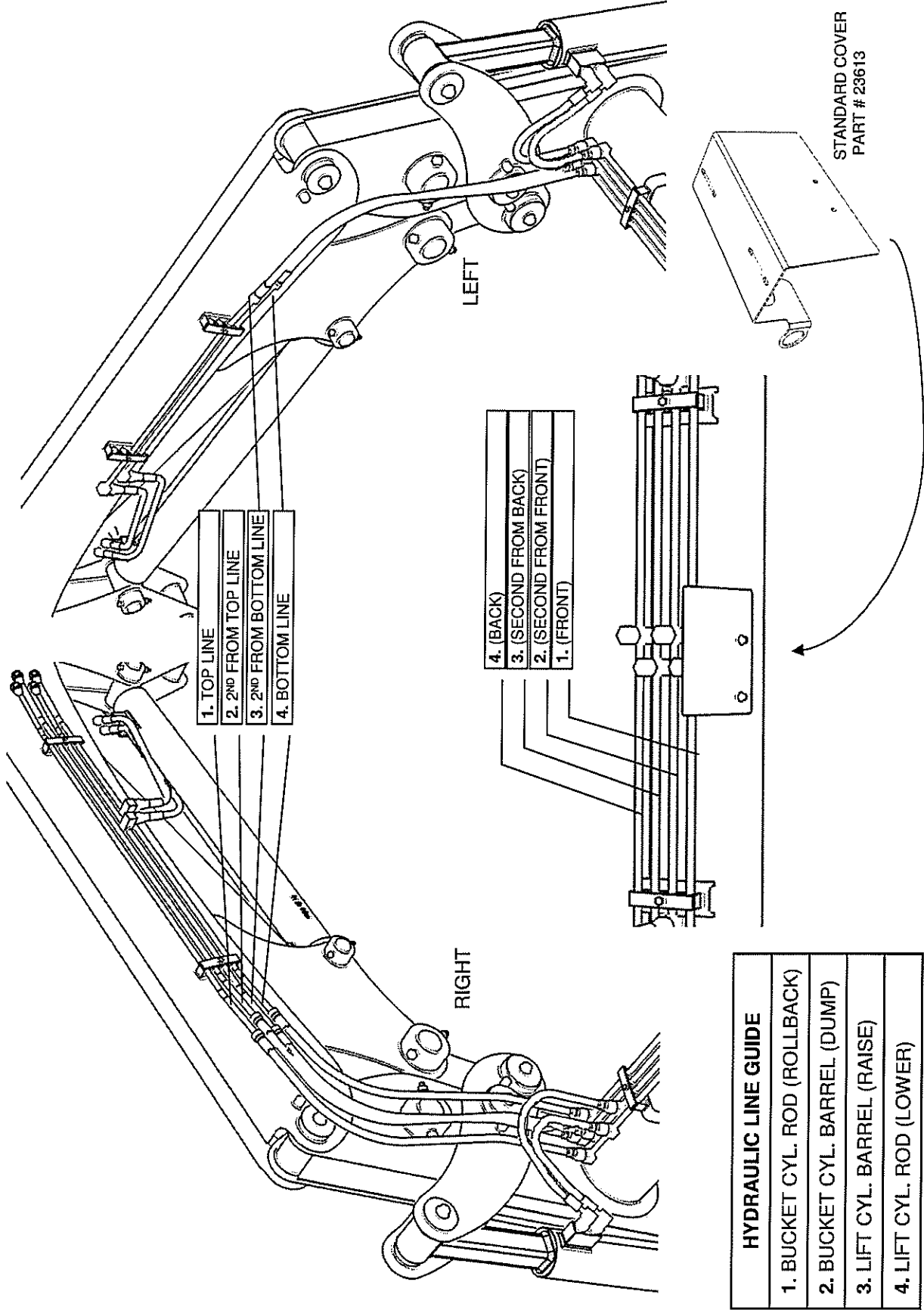


STANDARD HYDRAULIC LINES BREAKDOWN KIT # 23510

| ITEM | QTY | PART NUMBER & DESCRIPTION |
|------|-----|------------------------------------------------------------------------------------------|
| 1 | 4 | HF 0304C-8 - JIC CAP HYDRAULIC FITTING |
| 2a | 6 | 8TC-4 - PLASTIC CLIP |
| 2b | 6 | TCP-4 - STEEL PLATE FOR 8TC-4 |
| 4 | 8 | 23369 - HH24 - 6AT1(8MBX90,8FJX) HCL 24" |
| 5 | 2 | 23392 - STEEL LINE & HOSE ASSEMBLY (BOTTOM & 2 ND FROM BOTTOM ON RIGHT SIDE) |
| 6 | 1 | 23393 - STEEL LINE & HOSE ASSEMBLY (BOTTOM ON LEFT SIDE) |
| 7 | 2 | 23495 - STEEL LINE (BACK & 2 ND FROM BACK ON CROSS TUBE) |
| 8 | 2 | 23496 - STEEL LINE (FRONT & 2 ND FROM FRONT ON CROSS TUBE) |
| 9 | 2 | 23497 - STEEL LINE & HOSE ASSEMBLY (TOP & 2 ND FROM TOP ON RIGHT SIDE) |
| 10 | 1 | 23562 - STEEL LINE & HOSE ASSEMBLY (2 ND FROM BOTTOM ON LEFT SIDE) |

STANDARD HYDRAULIC CONFIGURATION

(USE THIS SHEET TO TRACE HYDRAULIC OIL FLOW)

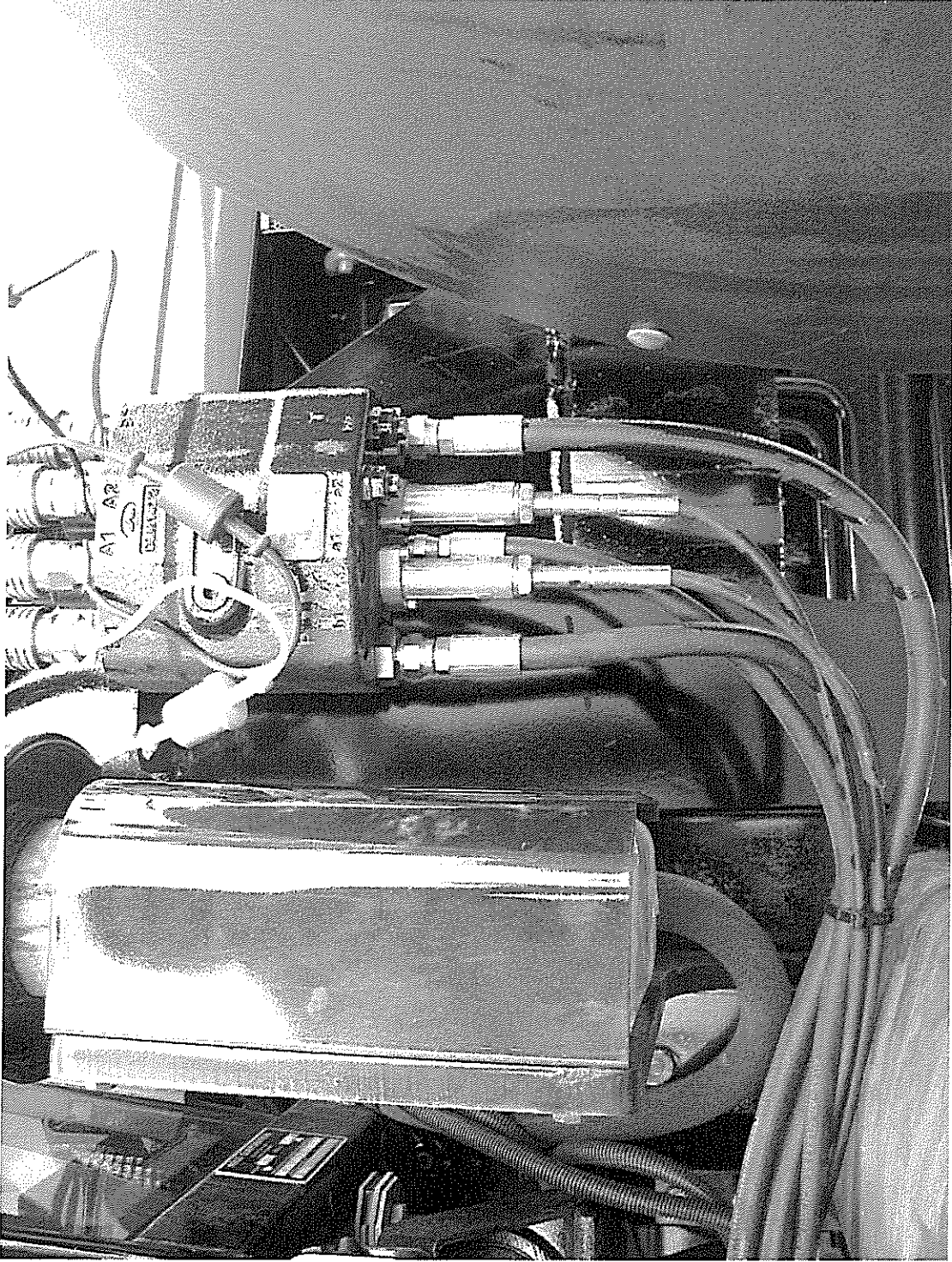


- 1. TOP LINE
- 2. 2ND FROM TOP LINE
- 3. 2ND FROM BOTTOM LINE
- 4. BOTTOM LINE

- 4. (BACK)
- 3. (SECOND FROM BACK)
- 2. (SECOND FROM FRONT)
- 1. (FRONT)

| HYDRAULIC LINE GUIDE |
|-------------------------------|
| 1. BUCKET CYL. ROD (ROLLBACK) |
| 2. BUCKET CYL. BARREL (DUMP) |
| 3. LIFT CYL. BARREL (RAISE) |
| 4. LIFT CYL. ROD (LOWER) |

STANDARD COVER
PART # 23613

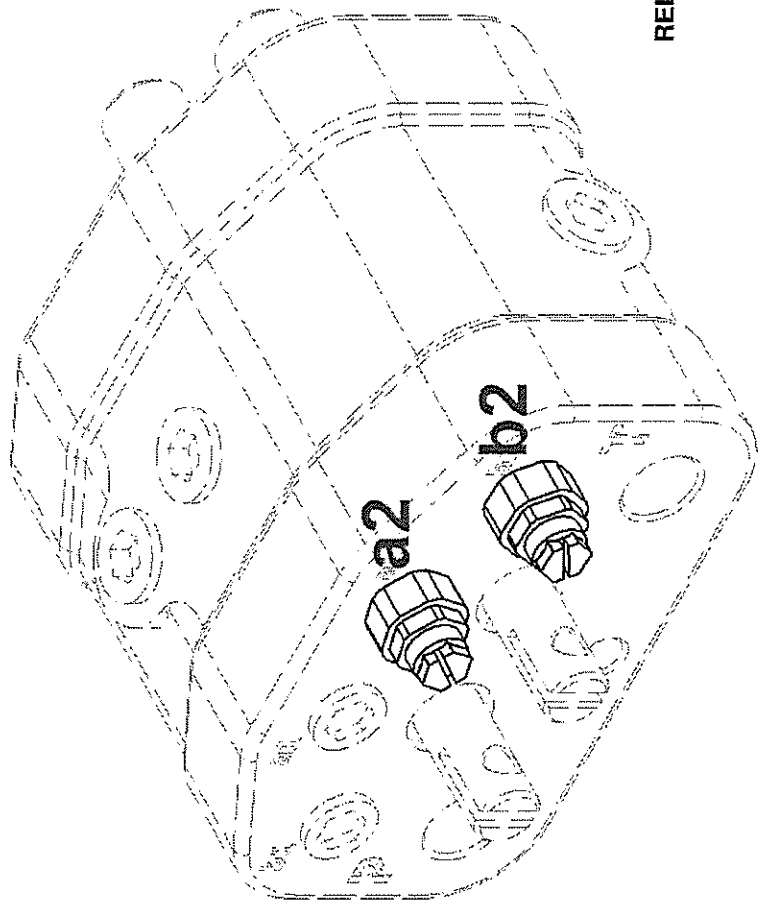


RELIEF VALVES IN CONTROL VALVE

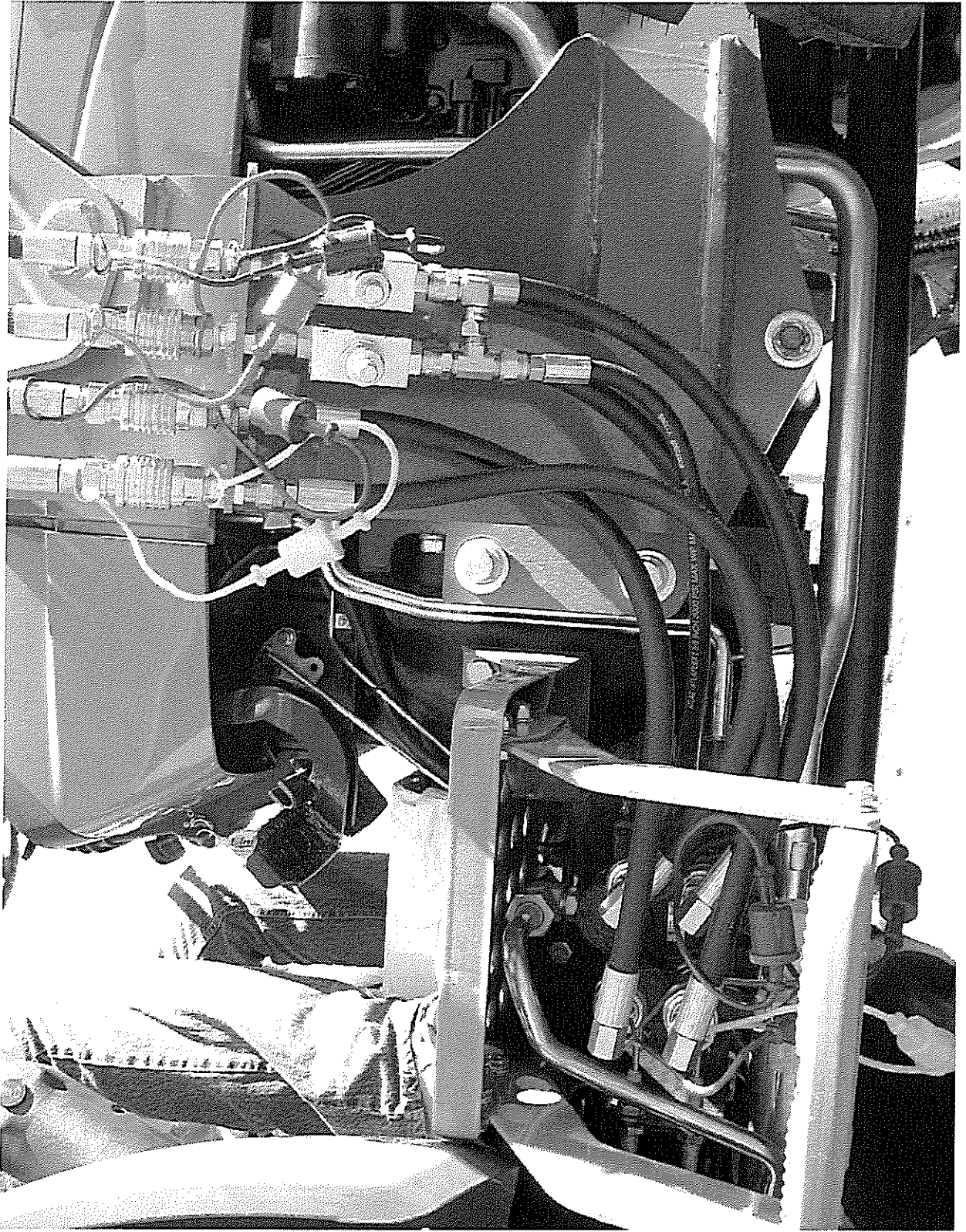
HYDRAULIC CONTROL VALVE RELIEF

THE HR 1100 LOADER REQUIRES RELIEF VALVES
IF YOUR LOADER HAS A CONTROL VALVE AS SHOWN
THE RELIEF VALVES WILL BE INSTALLED AS SHOWN (a2 & b2)

DO NOT REMOVE OR ADJUST THESE VALVES WITHOUT DETAILED INSTRUCTIONS.



RELIEF VALE PART (a2 & b2) # VAL XCAR308114



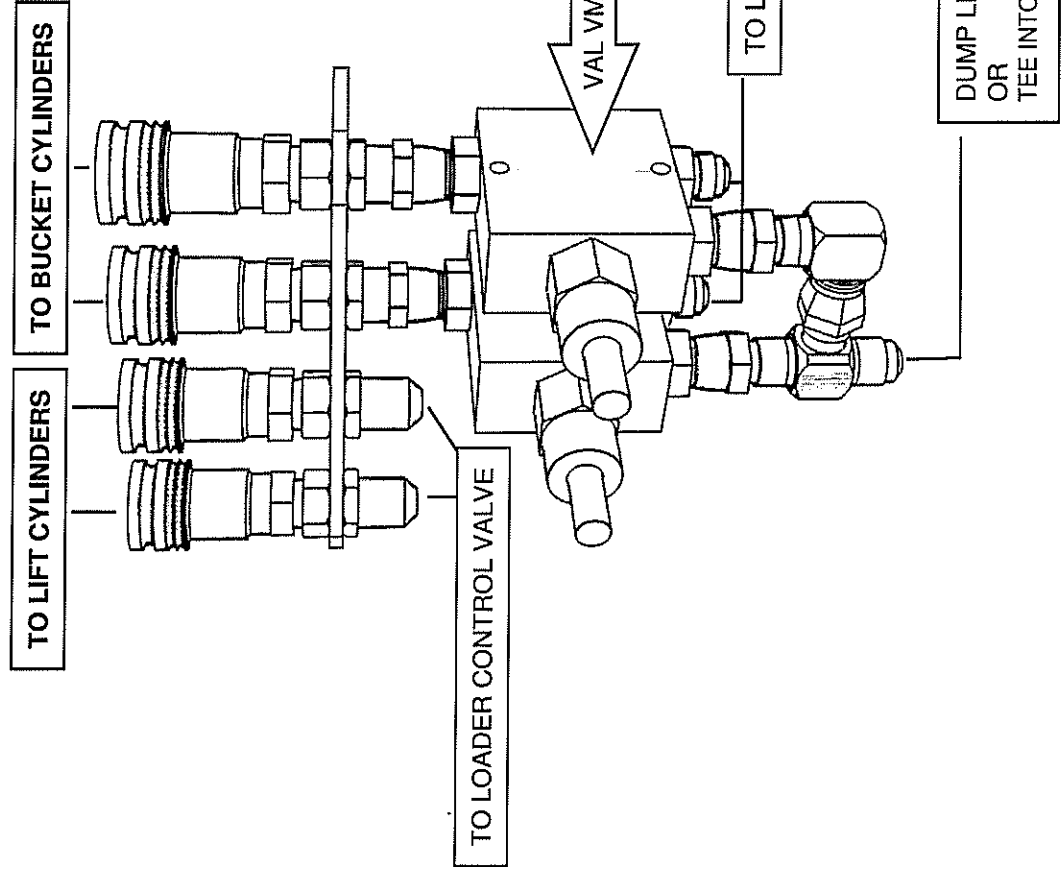
RELIEF VALVE KIT — # ML 3605

THE HR 1100 LOADER REQUIRES RELIEF VALVES

USE RELIEF KIT SHOWN HERE (# ML3605) IF YOUR LOADER DOES NOT HAVE RELIEF VALVES IN THE CONTROL VALVE AS SHOWN ON THE PREVIOUS PAGE.

IF YOUR TRACTOR IS "LOADER READY" WITH A FACTORY INSTALLED VALVE YOU **MUST** USE THIS KIT. DO NOT OPERATE THE LOADER WITHOUT RELIEF VALVES.

DO NOT REMOVE OR ADJUST THESE VALVES WITHOUT DETAILED INSTRUCTIONS.



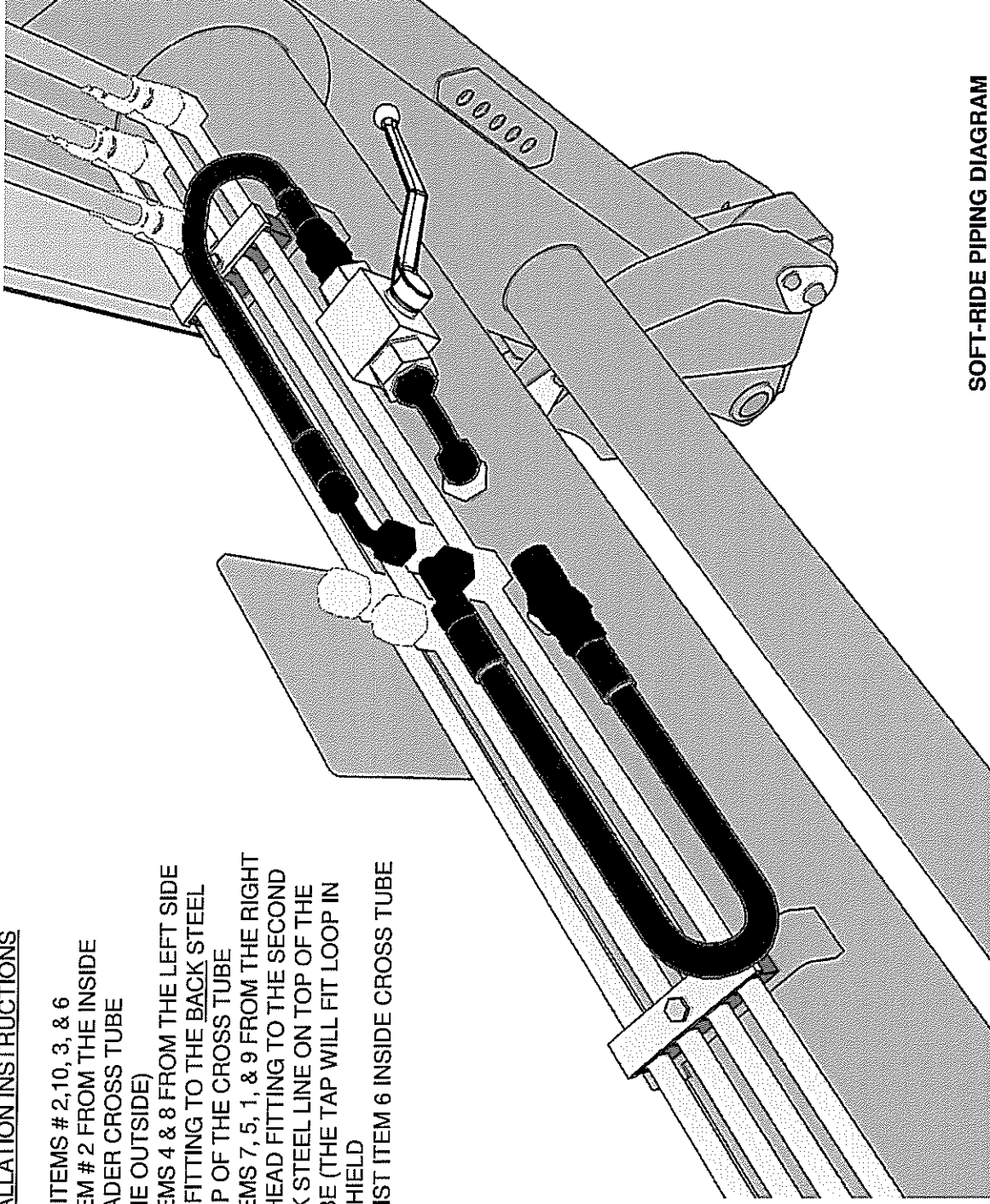


HR 1100

OPTIONAL FEATURES

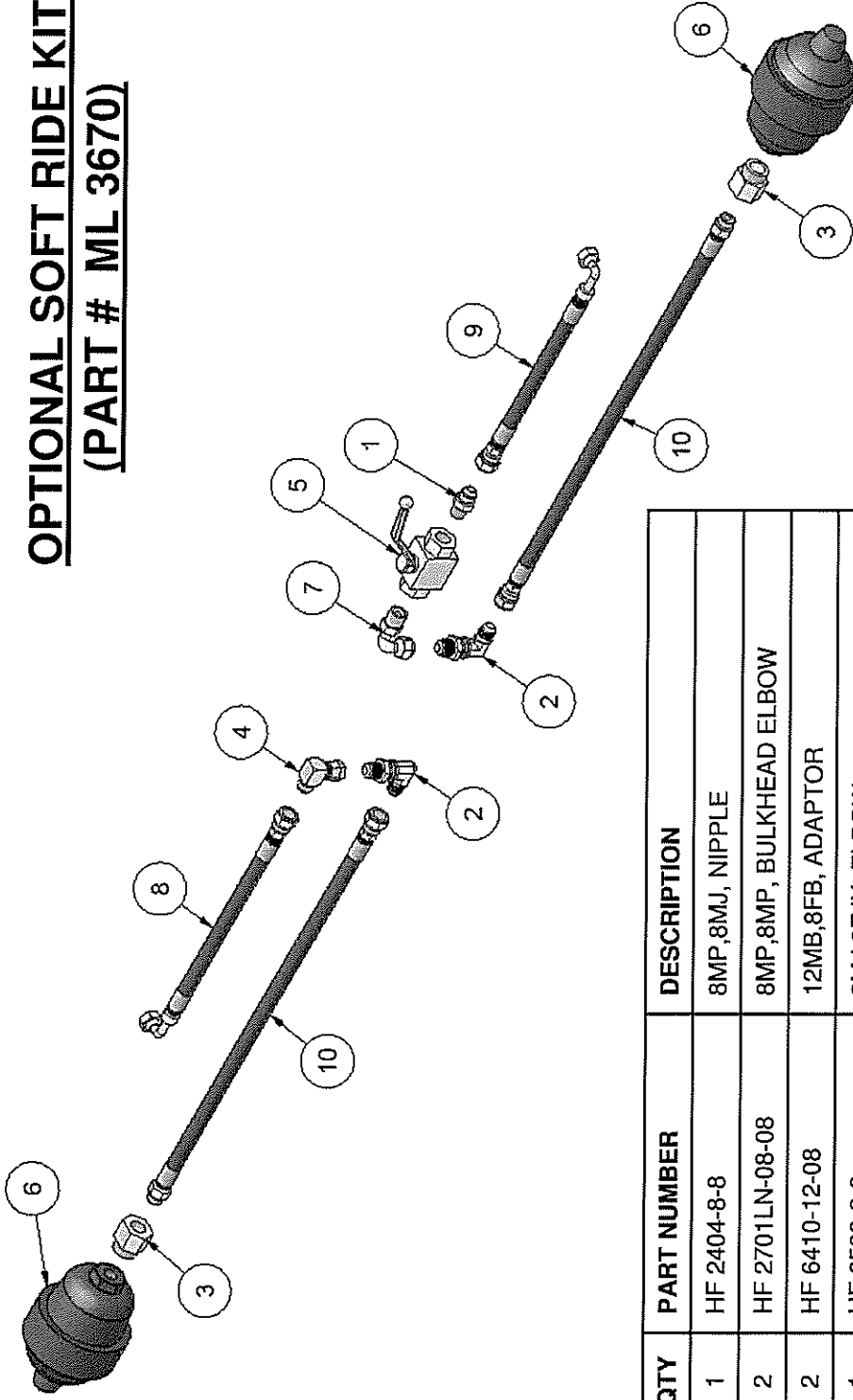
SOFT-RIDE INSTALLATION INSTRUCTIONS

1. ASSEMBLE ITEMS # 2,10, 3, & 6
2. INSTALL ITEM # 2 FROM THE INSIDE OF THE LOADER CROSS TUBE (NUT ON THE OUTSIDE)
3. INSTALL ITEMS 4 & 8 FROM THE LEFT SIDE BULKHEAD FITTING TO THE BACK STEEL LINE ON TOP OF THE CROSS TUBE
4. INSTALL ITEMS 7, 5, 1, & 9 FROM THE RIGHT SIDE BULKHEAD FITTING TO THE SECOND FROM BACK STEEL LINE ON TOP OF THE CROSS TUBE (THE TAP WILL FIT LOOP IN EXISTING SHIELD)
5. PUSH & TWIST ITEM 6 INSIDE CROSS TUBE

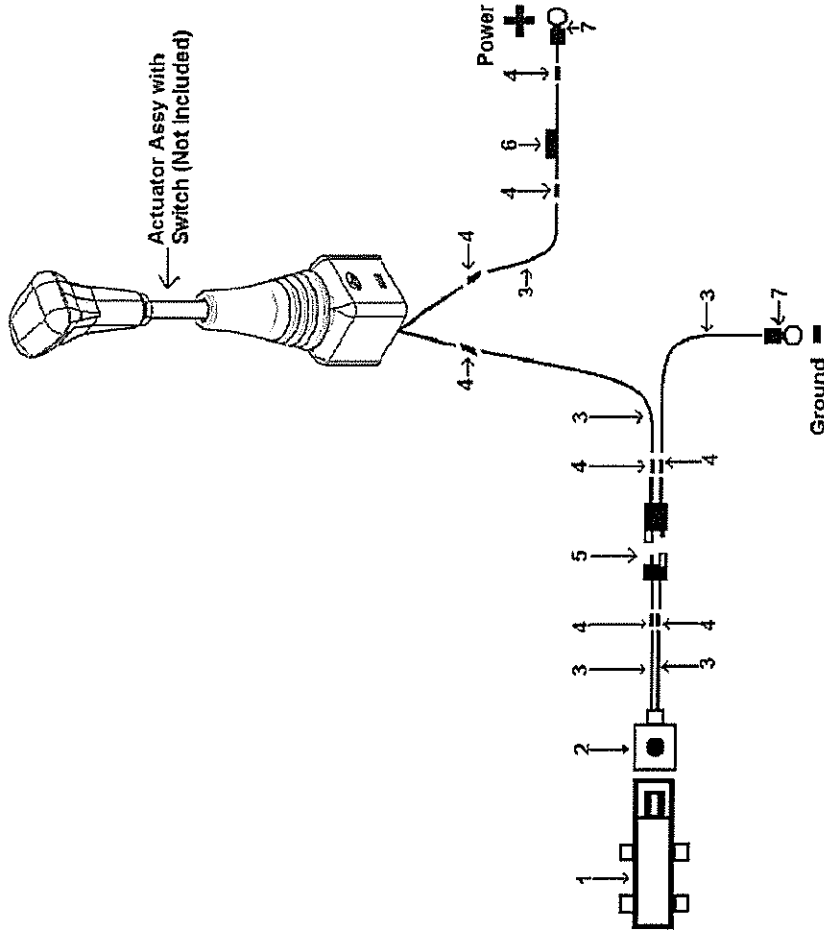


SOFT-RIDE PIPING DIAGRAM

OPTIONAL SOFT RIDE KIT
(PART # ML 3670)

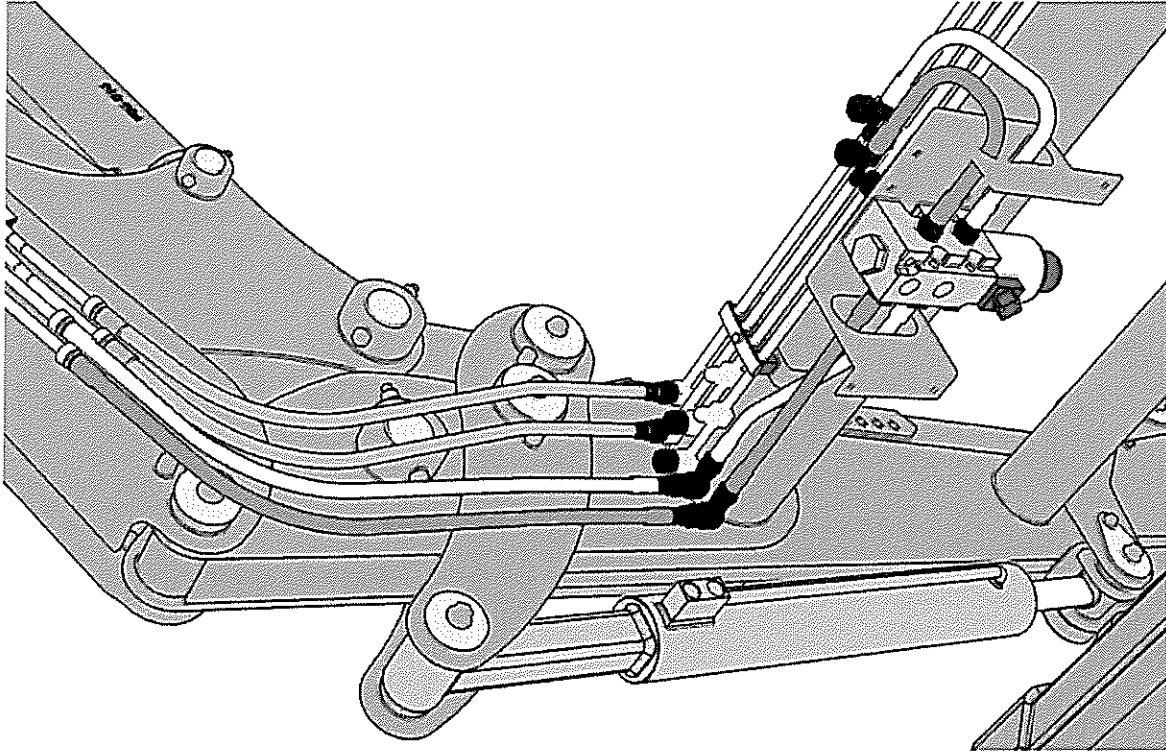


| ITEM | QTY | PART NUMBER | DESCRIPTION |
|------|-----|-----------------|-------------------------|
| 1 | 1 | HF 2404-8-8 | 8MP,8MJ, NIPPLE |
| 2 | 2 | HF 2701LN-08-08 | 8MP,8MP, BULKHEAD ELBOW |
| 3 | 2 | HF 6410-12-08 | 12MB,8FB, ADAPTOR |
| 4 | 1 | HF 6500-8-8 | 8MJ,8FJX, ELBOW |
| 5 | 1 | VAL BV73-100 | SHUT-OFF VALVE |
| 6 | 2 | VAL LAV.R18P040 | ACCUMULATOR |
| 7 | 1 | 22579 | 8MP,8FJX, TUBING ELBOW |
| 8 | 1 | 23631 | HH11 6AT1(8FJX90,8FJX) |
| 9 | 1 | 23632 | HH9 6AT1(8FJX90,8FJX) |
| 10 | 2 | 23633 | HH22 (8MB,8FJX) |



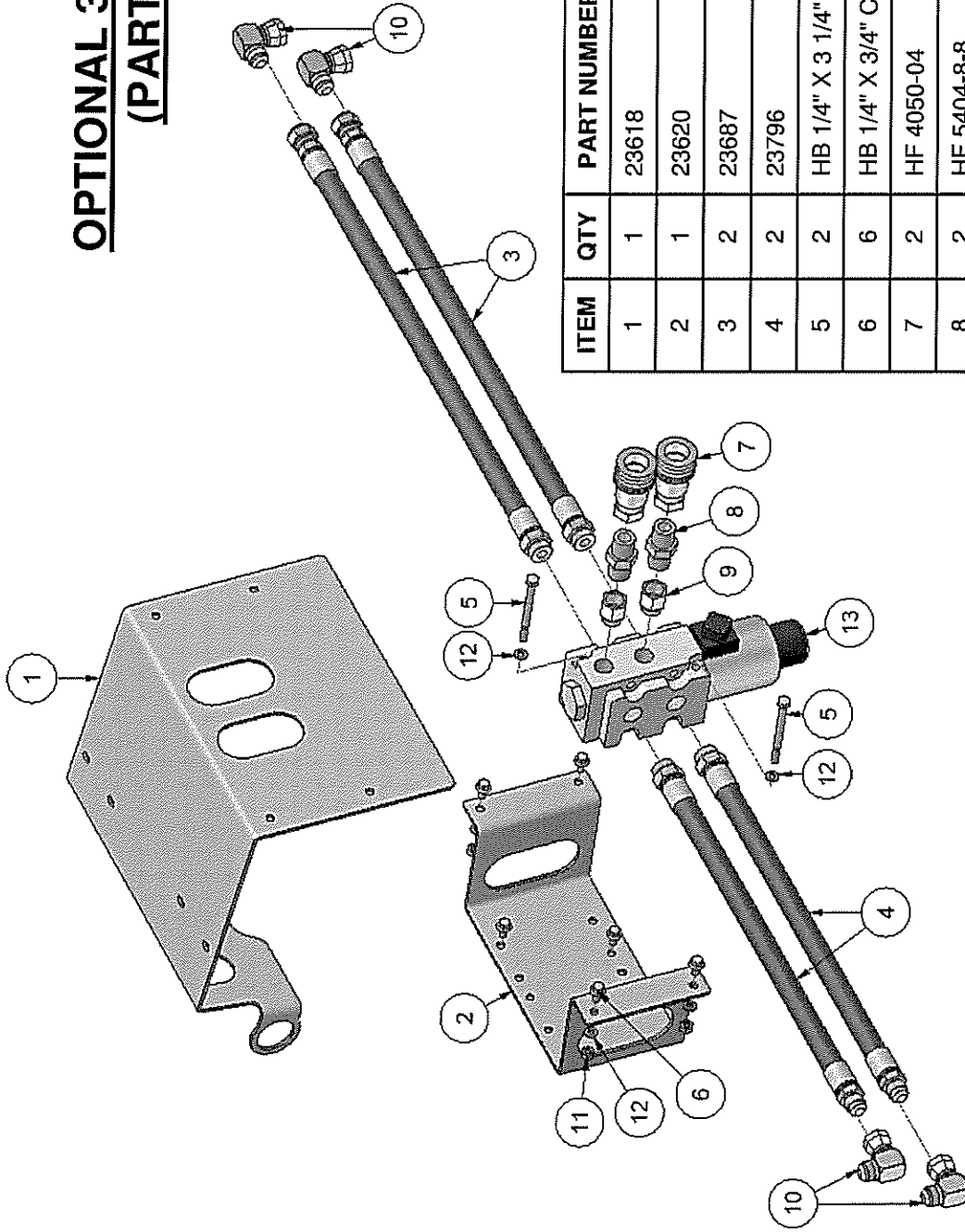
| ITEM | QTY | PART NUMBER | DESCRIPTION |
|------|-----|-------------|----------------------|
| 1 | 1 | VAL DFE140 | DIVERTER VALVE |
| 2 | 1 | VAL C02 | ELECTRIC CONNECTOR |
| 3 | 25' | EL23643 | CONDUCTOR PRIME WIRE |
| 4 | 8 | EL23662 | BUTT CONNECTOR |
| 5 | 1 | EL23640 | TRAILER CONNECTOR |
| 6 | 1 | EL23641 | FUSE HOLDER |
| 6 | 1 | EL23642 | 30 AMP FUSE |
| 7 | 2 | EL23661 | 1/4" EYE CONNECTOR |

3RD FUNCTION WIRING DIAGRAM



3RD FUNCTION PIPING DIAGRAM

OPTIONAL 3RD FUNCTION KIT (PART # ML 3673)



| ITEM | QTY | PART NUMBER | DESCRIPTION |
|------|-----|-------------------|----------------------|
| 1 | 1 | 23618 | 3RD FUNCTION COVER |
| 2 | 1 | 23620 | 3RD FUNCTION BRACKET |
| 3 | 2 | 23687 | HH20 8AT1(10MB,8FJX) |
| 4 | 2 | 23796 | HH16 8AT1(10MB,8MJ) |
| 5 | 2 | HB 1/4" X 3 1/4" | HEX BOLT |
| 6 | 6 | HB 1/4" X 3/4" CS | FLANGE HEX BOLT |
| 7 | 2 | HF 4050-04 | FEMALE QUICK-COUPLER |
| 8 | 2 | HF 5404-8-8 | 8MP,8MP, NIPPLE |
| 9 | 2 | HF 6405X10X8 | 10MB,8FP, ADAPTOR |
| 10 | 4 | HF 6500-8-8 | 8MJ,8FJX, ELBOW |
| 11 | 4 | HN 1/4" | Hex Nut |
| 12 | 6 | LW 1/4" | LOCK WASHER |
| 13 | 1 | VAL DFE140 | DIVERTER VALVE |

KIT # ML3673 ALSO INCLUDES WIRING(SHOWN ON PREVIOUS PAGE)